



ASHWOOD

RESIDENCES

BY SKYLAND PROPERTIES

LIVE BEAUTIFULLY

Luxury
is in
each
detail.

-Hubert de Givenchy

Skyland Properties is proud to bring a new landmark to the heart of Dubai, drawing on decades of expertise in developing curated luxury communities. Known for creating timeless, sophisticated living spaces that elevate the lifestyle of residents, Skyland Properties has built a legacy of excellence.

Every project is a masterpiece, meticulously designed to meet the highest standards of luxury, comfort, and modern living. With a commitment to innovation and an unwavering focus on quality, Skyland Properties continues to redefine what it means to live in style. Their latest development is a refined, luxurious residential community that will stand as an icon of elegant living in Dubai for years to come.

Dubai

Endless Horizons, Infinite Bliss

An aerial photograph of Dubai, United Arab Emirates, during sunset. The city's skyline is visible, featuring numerous skyscrapers and modern buildings. The water in the foreground is calm, reflecting the golden light of the setting sun. Several small boats are scattered across the water. The overall atmosphere is serene and majestic.

Dubai is a top global destination for living and investment, offering modern infrastructure, safety, and a high quality of life. Its thriving economy, tax-friendly policies, and diverse real estate options—from luxury apartments to villas—attract investors worldwide.

Top 10
Safest
Cities in
the World

Over 85%
Expats
with 200
Nationalities

Ranked 4th
Globally for
Infrastructure
Quality

World's
second most
visited city
for tourism

Rental yields
Are higher than
London or New
York

Dubai airport
connects
to over 240
destinations.

Dubai has more
5-star hotels
than any city in
the world.

JVT

The Heart Of Dubai

Jumeirah Village Triangle (JVT) is a sought-after residential community in New Dubai, offering a perfect blend of urban convenience and suburban tranquility. Thoughtfully designed, it features modern homes, lush green spaces, and a family-friendly atmosphere. Strategically located, JVT provides seamless access to Dubai Marina, JBR, and Mall of the Emirates, with major highways like Sheikh Zayed Road and Al Khail Road ensuring easy connectivity to the city's key destinations.

Strategic location

Community-centric living

Exceptional amenities

Close proximity to malls and retail

Educational institutions and healthcare

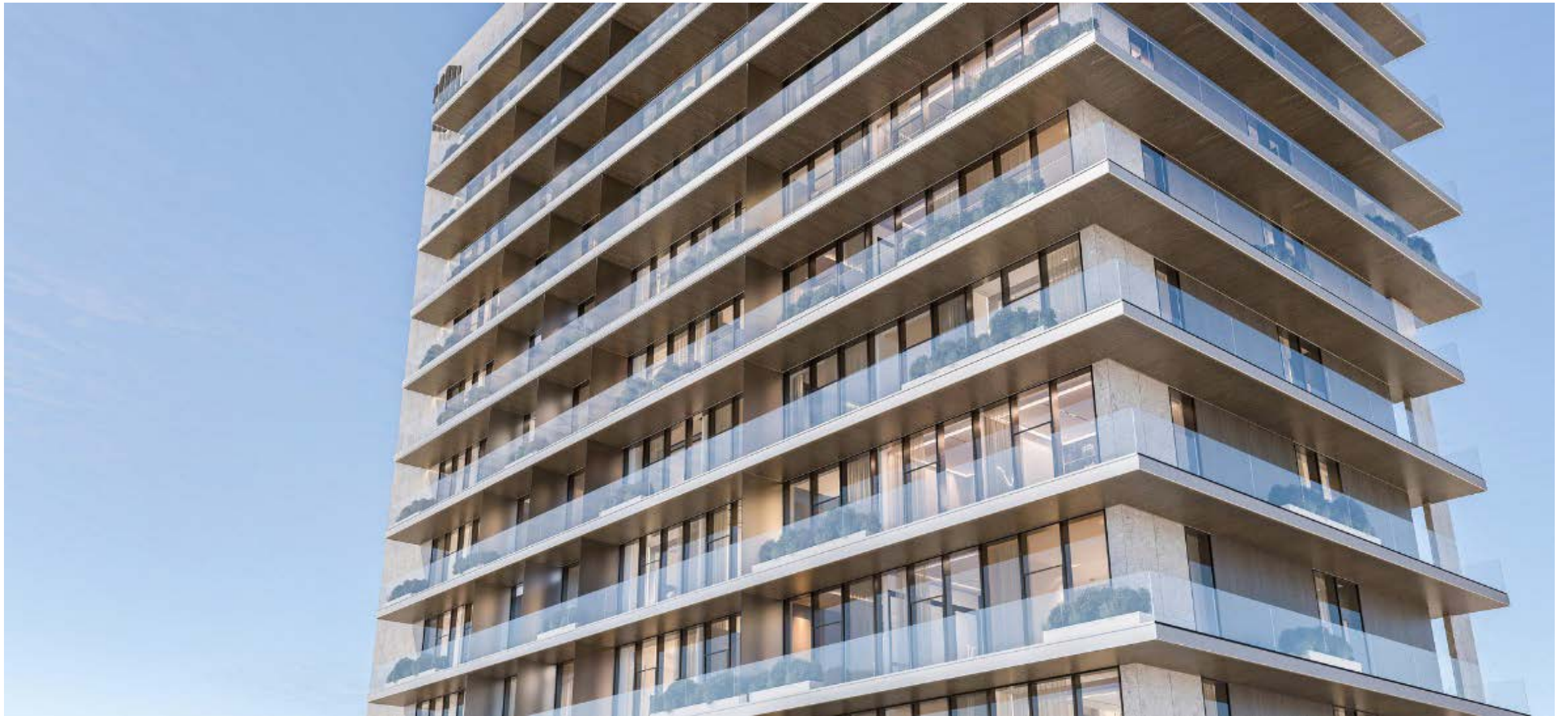
Affordable luxury

Peaceful, suburban feel in the city

An Icon of Architectural Elegance



The Pinnacle of Luxury Living





Imagine coming home to a world where each moment is wrapped in opulence, yet the atmosphere remains welcoming and warm. The amenities are thoughtfully curated to enhance your daily life, from the refreshing poolside to the state-of-the-art fitness center, all surrounded by lush, manicured landscapes.



Imagine driving home to a place that feels like a personal sanctuary, where every detail is designed to welcome you with elegance and comfort. As you approach the grand entrance, you're greeted by a sense of arrival that transcends the ordinary—a feeling akin to stepping onto Cloud 9, where the world fades away and luxury takes center stage.

The Lobby

Step into the grand lobby of Ashwood Residences, where luxury meets sophistication. A striking double-height ceiling sets the stage for an atmosphere of grandeur and exclusivity. Designed to impress, this elegant space blends beauty with functionality, offering a warm yet prestigious welcome home.









Apartments

Endless Horizons, Infinite Bliss

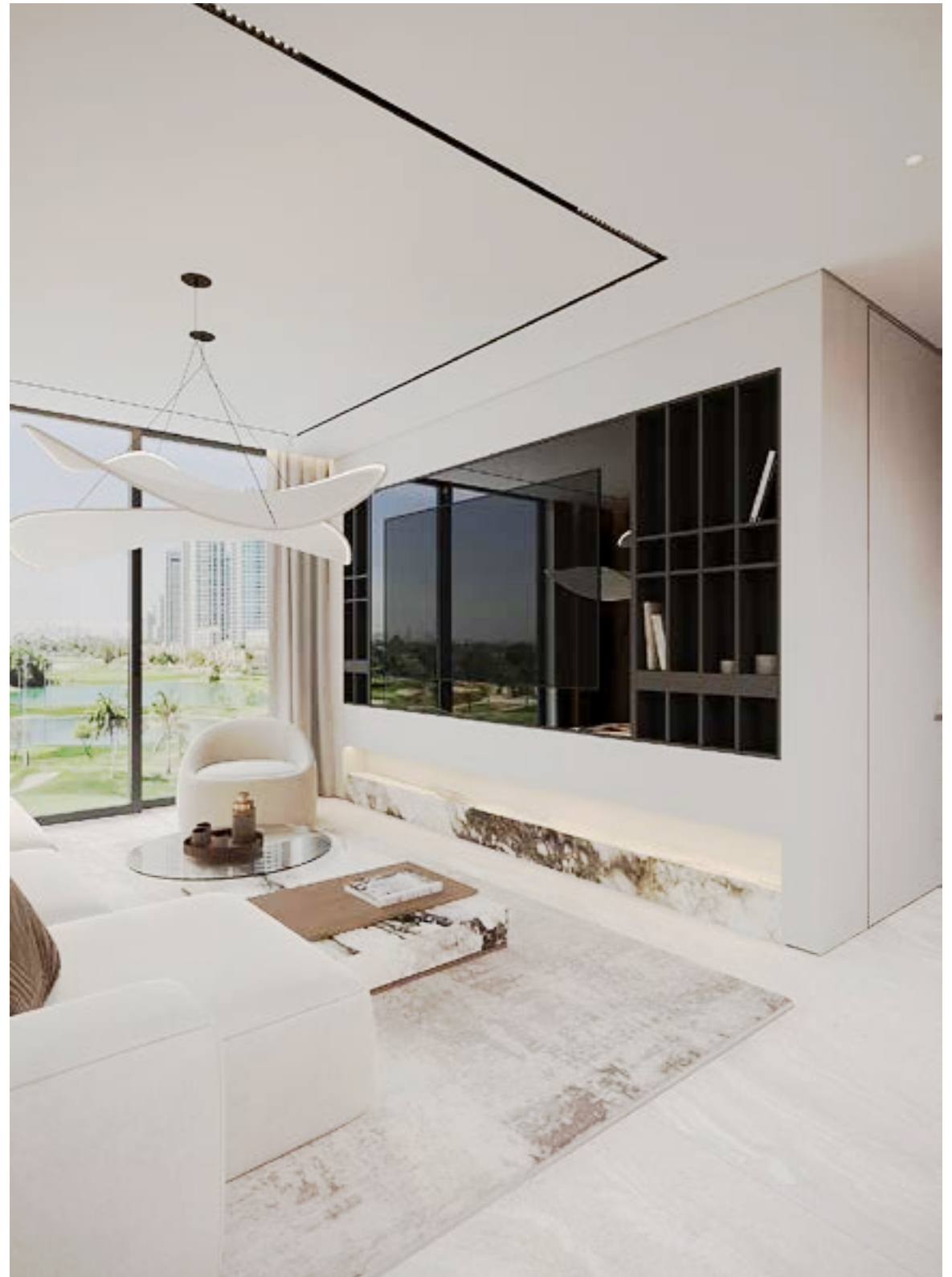


A blurred, grayscale background image showing a person's hands holding a small, round object, possibly a fruit or vegetable, against a light background.

1 BED APARTMENT



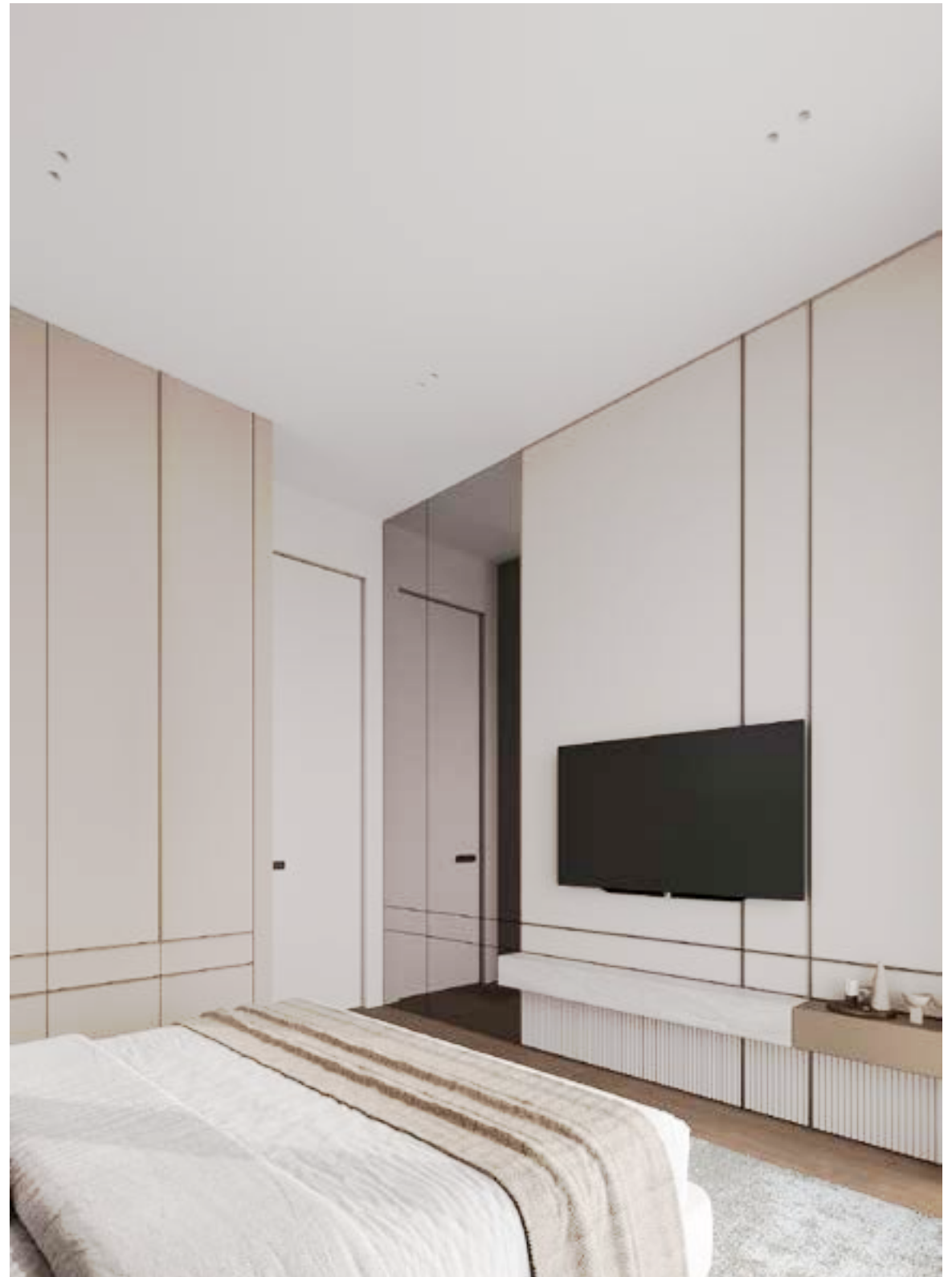
LIVING ROOM



LIVING ROOM



KITCHEN



BEDROOM



BATHROOM

A blurred, grayscale image of a person's face, likely a woman, serves as the background for the text. The image is out of focus, showing soft contours of the face and hair.

2 BED
APARTMENT



LIVING ROOM



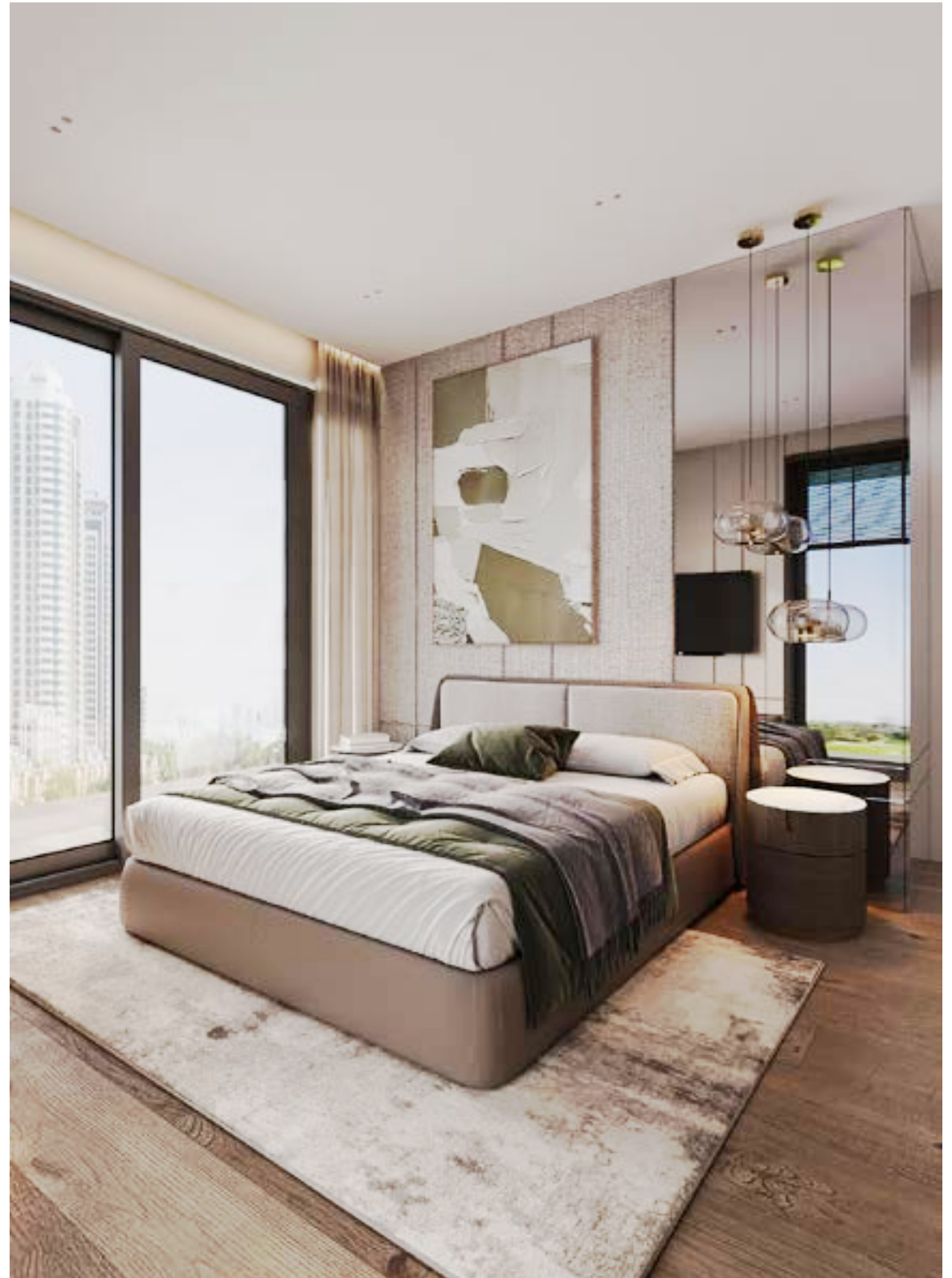
LIVING ROOM



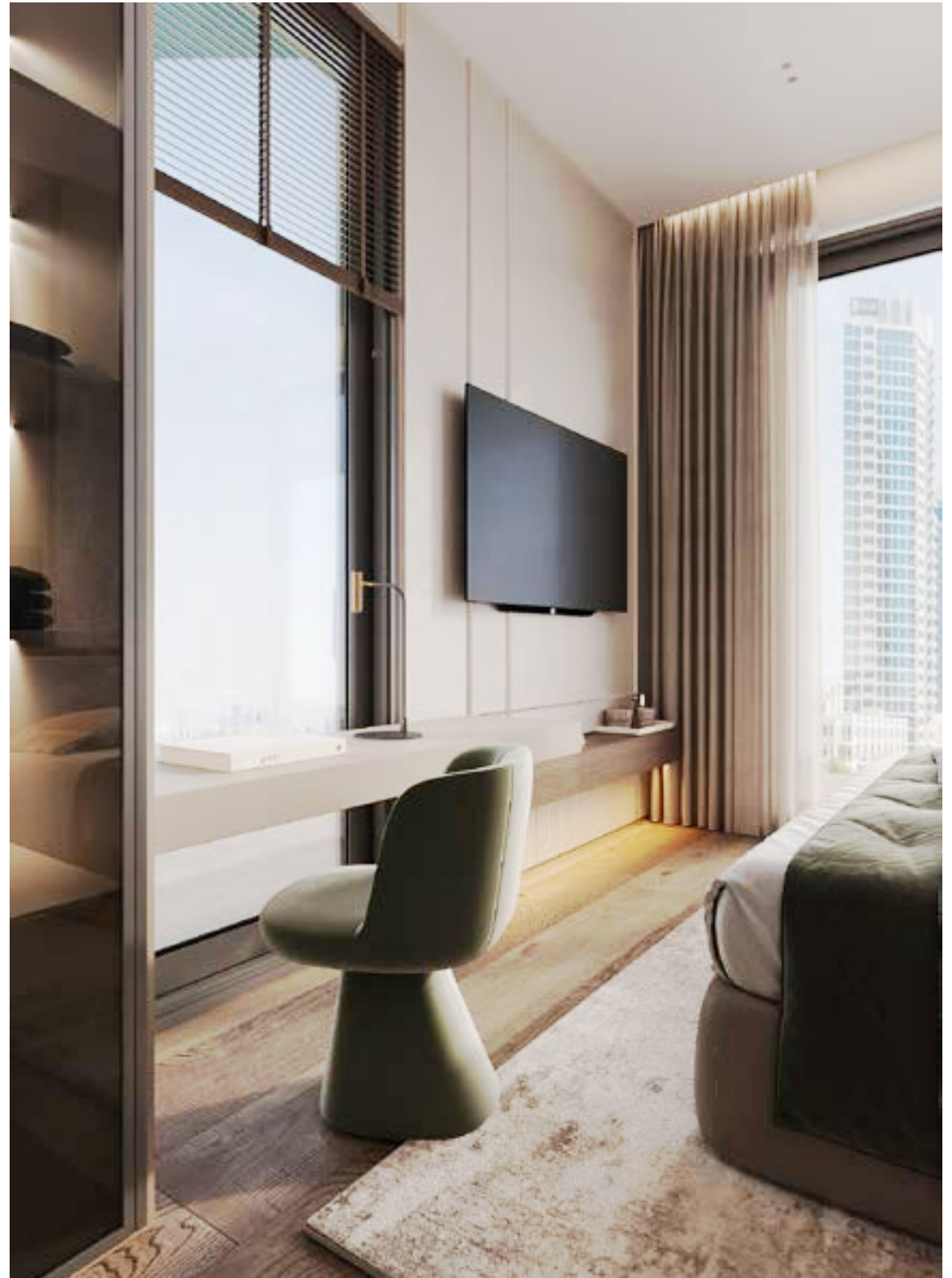
LIVING ROOM



KITCHEN AREA



MASTER BEDROOM



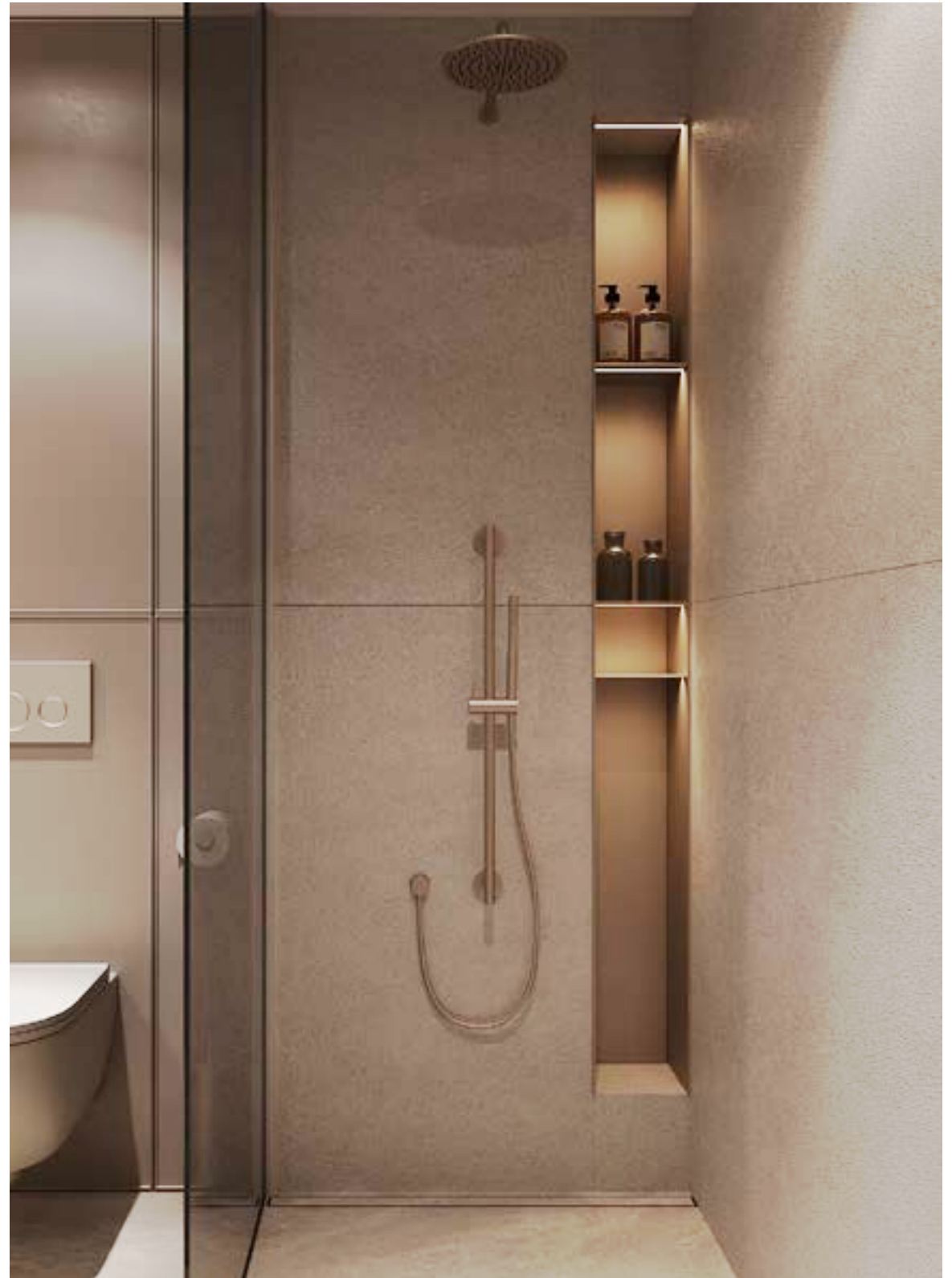
MASTER BEDROOM



SECONDARY BEDROOM



SECONDARY BEDROOM



BATHROOM



3 BED
APARTMENT



LIVING ROOM



LIVING ROOM





KITCHEN



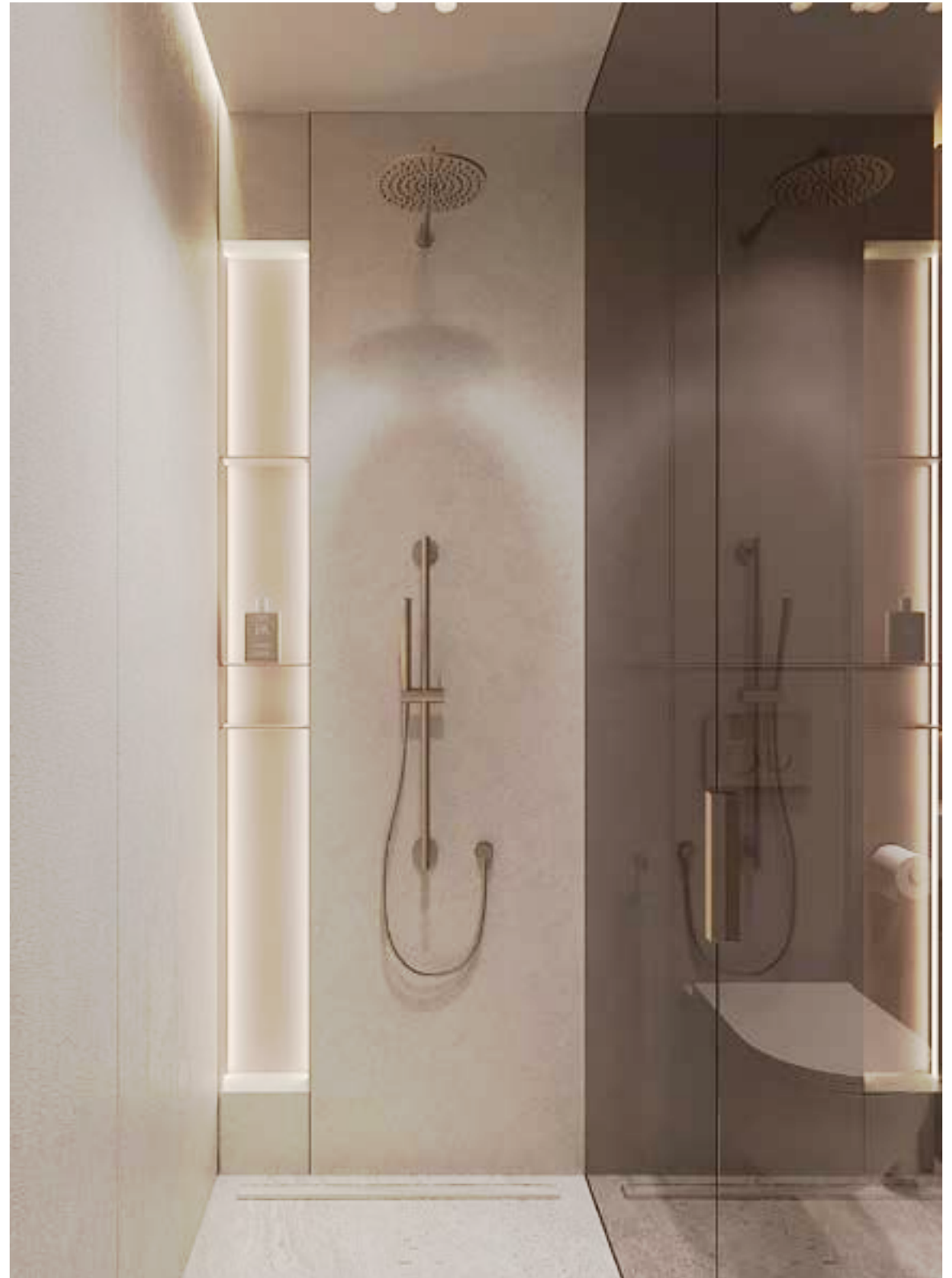
MASTER BEDROOM - 1



MASTER BEDROOM - 1



MASTER BEDROOM - 1



BATHROOM



STUDY ROOM



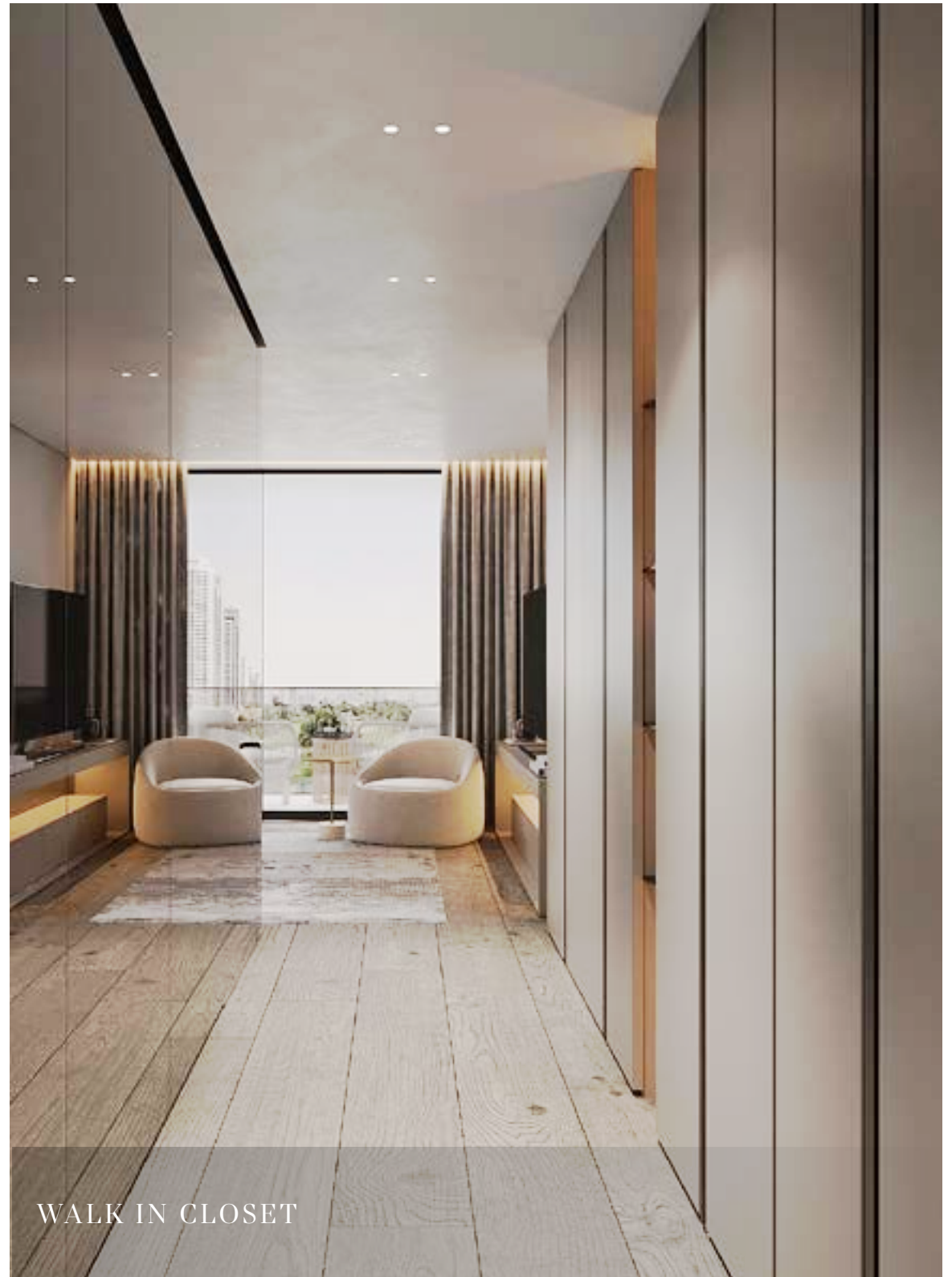
STUDY ROOM



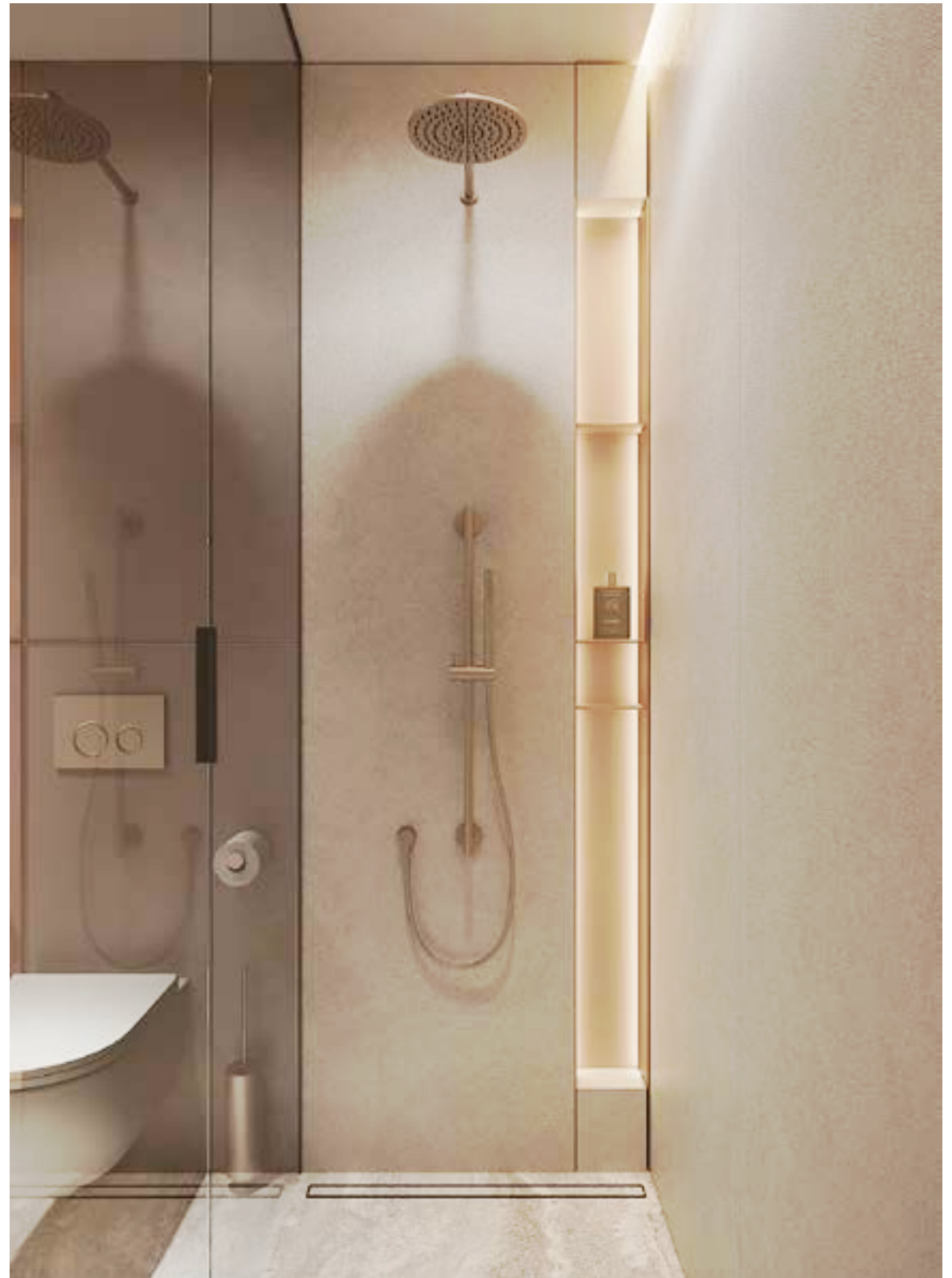
MASTER BEDROOM - 2



MASTER BEDROOM - 2



WALK IN CLOSET



BATHROOM



POWDER ROOM



MAID'S ROOM





STUDIO
APARTMENT



LIVING ROOM



LIVING ROOM



BEDROOM



BEDROOM



BATHROOM

Amenities

Bespoke Amenities Curated To Your Lifestyle



Temperature-controlled swimming pool

Sunbeds and deck

World-class padel court

Café/lounge

State-of-the-art gym

Steam room

Fitting room

Indoor and outdoor kids' play area

Lawns for events and gatherings

Zen garden for yoga and meditation

Barbecue area

Luggage room

Temperature-Controlled Common Pool



Sunbeds and Deck



Disclaimer: These are representational images, not actuals.

World-Class Padel Court



Steam Room



State-of-the-Art Gym











Indoor & Outdoor Kids' Play Area



Disclaimer: These are representational images, not actuals.





Disclaimer: These are representational images, not actuals.



Barbecue Area



Disclaimer: These are representational images, not actuals.

Dedicated Concierge And Luggage Room



Standout Living Features



German appliances and designer finishes

Home automation

Smart corridor lighting

24/7 hot water

Pod-enabled building

Timeless design

Golf course & Emirates Hills views

11-foot ceilings

EV charging stations

Individual letterboxes

Fully furnished interior



Bluewaters
Islands

Palm
Jumeirah

Dubai Marina
Mall

Burj Khalifa

Emirates Hills

Jumeirah Park
District

Al Furjan Metro
Station

Dubai Hills
Mall

NMC Royal
Hospital

Ashwood
Residences

Jumeirah
Village Circle

Kings' School
Al Barsha

Jumeirah Golf
Estate

Mediclinic
Parkview
Hospital

Dubai
Miracle
Garden

Expo City

Al Maktoum
International Airport

At The Heart Of It All

5 mins

Bluewaters Island

7 mins

Jumeirah Park
District

9 mins

Al Furjan Metro
Station

11 mins

Dubai Marina Mall

11 mins

NMC Royal Hospital

12 mins

Palm Jumeirah

15 mins

Expo City

15 mins

Dubai Miracle
Garden

16 mins

Emirates Hills

17 mins

Jumeirah Golf
Estate

17 mins

Jumeirah Village
Circle

18 mins

Mediclinic Parkview
Hospital

20 mins

Dubai Hills Mall

22 mins

Al Maktoum
International Airport

22 mins

Kings' School Al
Barsha

26 mins

Burj Khalifa



SKYLAND
PROPERTIES

www.skylandproperties.ae